

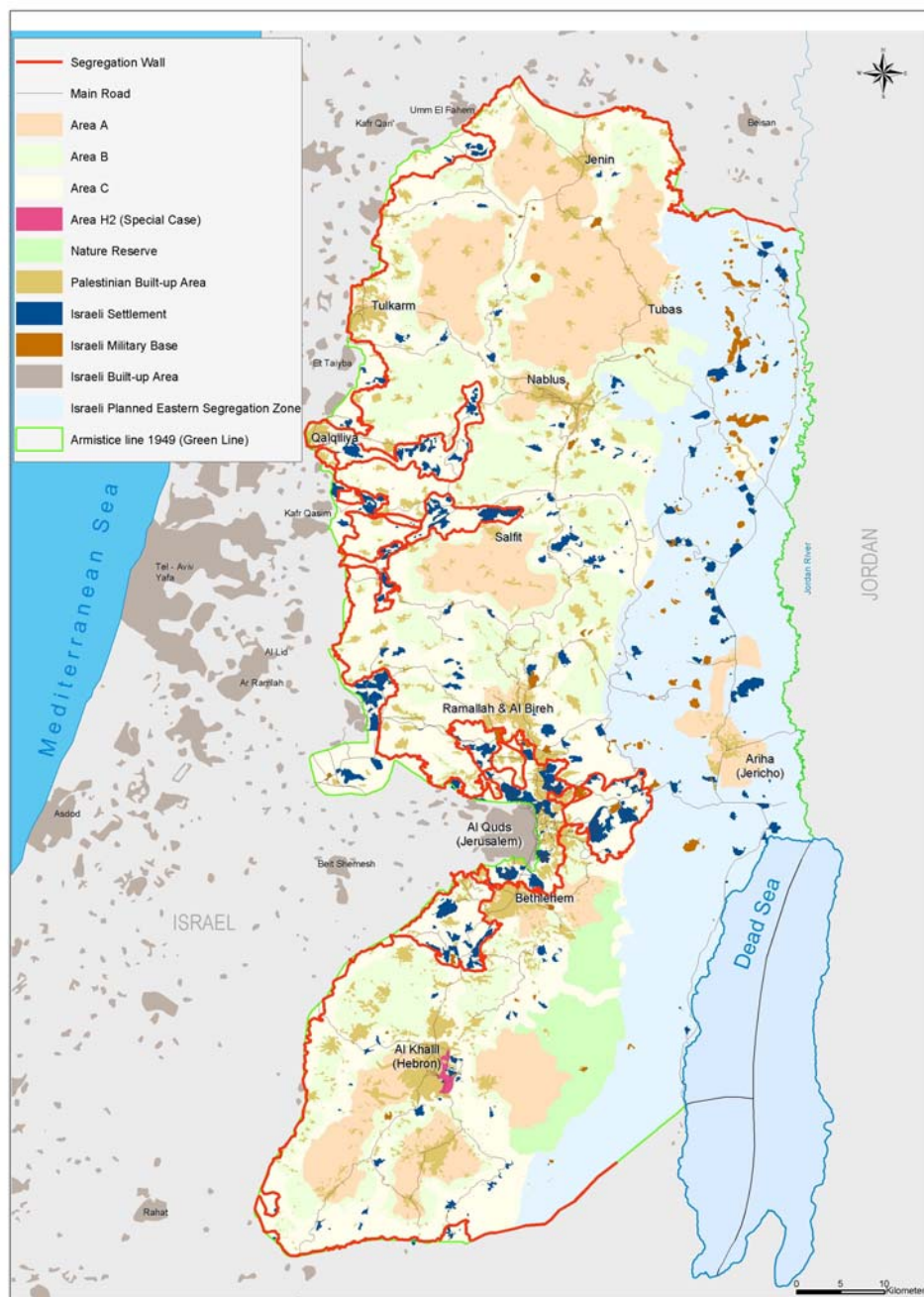
# Israel's Segregation Wall

## Isolation and Ghettoization in the Holy

ARIJ Quick Facts

On April 30, 2006, the Israeli Government released a revised route of the Western Segregation plan, where the Wall will run for 703 Km along the western Segregation Wall in the West Bank. However, changes and alterations by the Israeli Army continued on the ground and based on new military orders, the length of the Wall has increased by 3% (22 Km).

The Israeli Segregation Wall in the West Bank



The new revised route will run the Segregation Wall on 128 Km (17.6 % of the total length) of the 1949 Armistice Line (Green Line). When completed, the Segregation Wall will isolate behind it some 555 Km<sup>2</sup> of Palestinian lands (9.8 % of the total West Bank area 5661 km<sup>2</sup>). It will continue to enclose 103 Israeli settlements, accommodating 408,000 (85%) of the Israeli settlers' total population in the West Bank (480,000); however, it increases the number of isolated Palestinian localities behind the Segregation Wall to 63.

In addition, the Israeli Army have control over the Eastern Segregation Zone (1555 km<sup>2</sup> - 27.5% of the West Bank) through 25 military controlled checkpoints along the 200 Km stretch from north to south. After the 1967 war, Israel classified of what is identified now as the Eastern Segregation Zone, some 925 Km<sup>2</sup> as 'closed military area'. Furthermore, Israel has illegally classified an additional 632 Km<sup>2</sup> of the Eastern Segregation Zone as 'State Land' which include the area of the settlements, the military bases, and some parts of the closed military areas. In total, the Segregation Plan appropriates at least 37.3% of the total West Bank area.

#### The Status of the Segregation Wall in the West Bank:

- 363 km (50% of the total length) is completed in the West Bank.
- 263 km (36.3% of the total length) is planned to be constructed in the West Bank.
- 97 km (13.7% of the total length) is under construction in the West Bank.
- 128 km (17.6% of the total length) runs on the 1949 Armistice Line (Green Line).

#### Palestinian Communities Affected by the Segregation Wall:

- 63 Palestinian communities, including more than 90,000 people, are and will be isolated in The Western Segregation Zone.
- 41 Palestinian communities, including more than 32,000 people, will be isolated in the Eastern Segregation Zone.

#### Environmental Resources Appropriated by the Segregation Wall:

- 29 wells and 32 springs will be isolated in the Western Segregation Zone.
- 105 wells and 30 springs will be isolated in the Eastern Segregation Zone
- Up to 189,001 dunums (189.1 Km<sup>2</sup>) of agricultural land are isolated within the Western Segregation Zone in addition to 863,879 dunums (863.9 Km<sup>2</sup>) within the Eastern Segregation Zone, both of which constitute 37.4% of the total agricultural areas of the West Bank.
- Up to 128,404 dunums (128.4 Km<sup>2</sup>) of forest land and areas with shrubs are included in the Western Segregation Zone and 110,274 dunums (110.3 Km<sup>2</sup>) in the Eastern Segregation Zone, both of which constitute 37.7% of the total forest area and area with shrubs in the West Bank.

#### The Segregation Wall and Illegal Israeli Settlements

- 103 Israeli settlements (out of 207 settlements in the West Bank), with a combined population of approximately 408,000 (85% of the total Israeli settlers' population are in the West Bank) are in the Western Segregation Zone.
- Settlements in the Western Segregation Zone cover an area of 101.7 km<sup>2</sup> (18.3% of the Zone).
- Settlements in the Eastern Segregation Zone cover an area of 38 km<sup>2</sup> (2.3% of the area of the Zone).
- 43 Israeli settlements, with a combined population of more than 12000 settlers, (2.5% of the settlers' population), are in the Eastern Segregation Zone.